

X360dock Module 1 Installation Guide

For hardware version 1.0 (Fat)

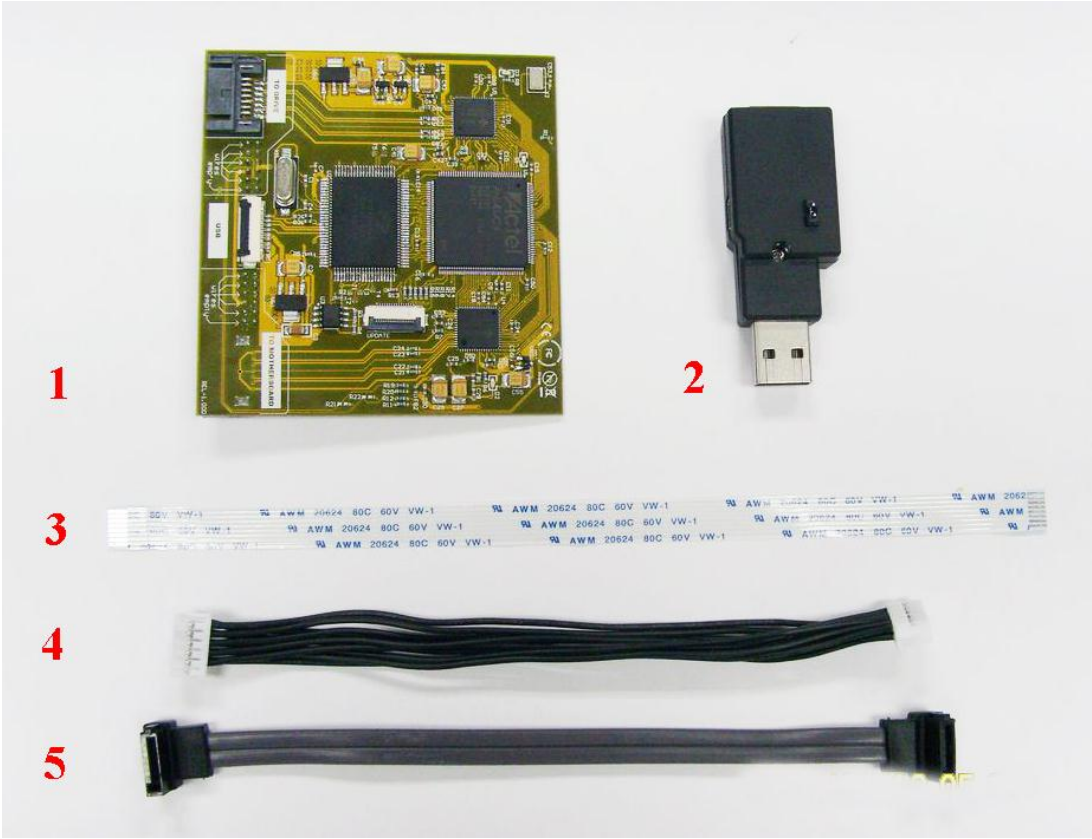
Introduction

This document will teach you how to install the X360dock XBOX360 drive emulator for Xbox360 Fat step by step, please follow the steps below and be careful during the installation process.

In order to put the X360dock inside the Xbox360 Fat, you need to disassemble your Xbox360 console first. There are many videos online can tell you how to open the xbox360 Fat, just follow those video guides, you can do it easily. After you disassemble your Xbox360, your console will look like the picture below.



Contents of your X360dock



- 1. X360dock PCBA
- 2. USB Dongle
- 3. Flexible Flat Cable
- 4. Power Cable
- 5. SATA Cable

1. Unplug the SATA and power cables from the DVD drive and take out the drive from Xbox360. Avoid bend too much your SATA cable by unplugging/plugin and reversing the sides.

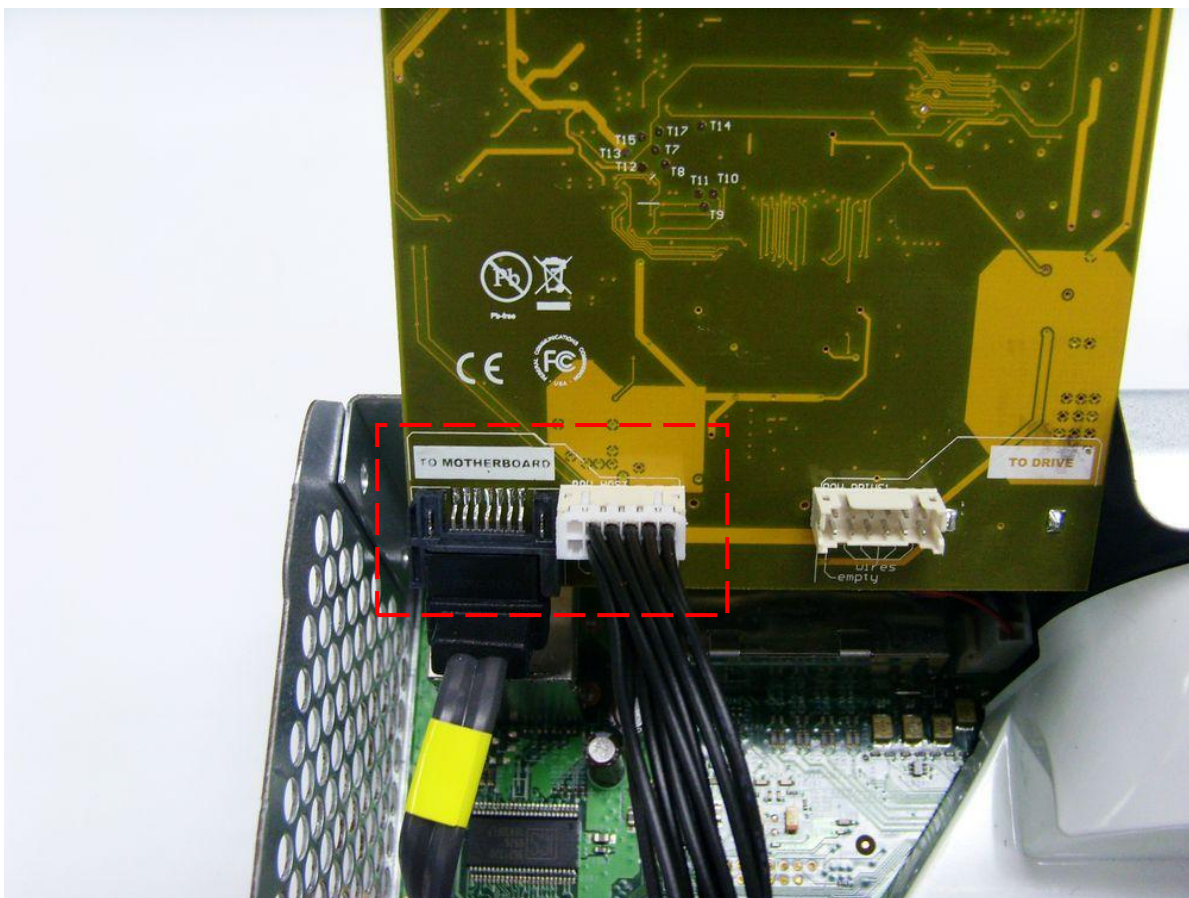


BEFORE(Original)

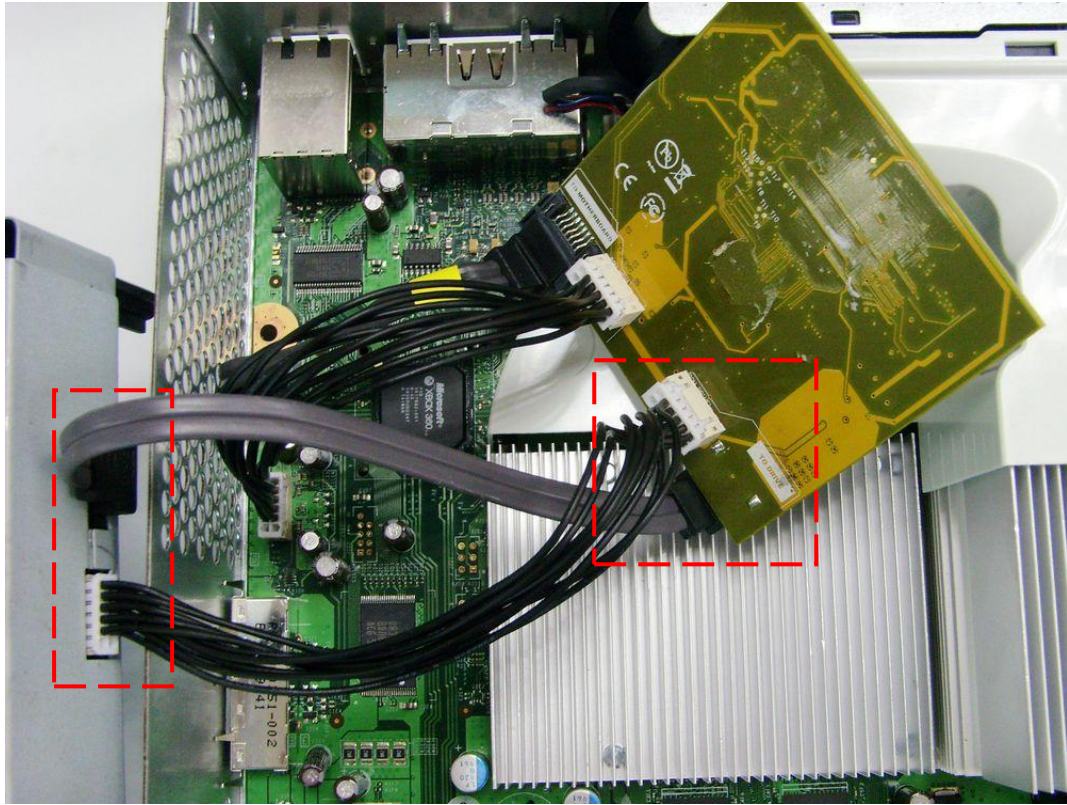


LATER(Sata Inversed)

2. Connect SATA/power cables in the "TO MOTHERBOARD" X360dock connector.

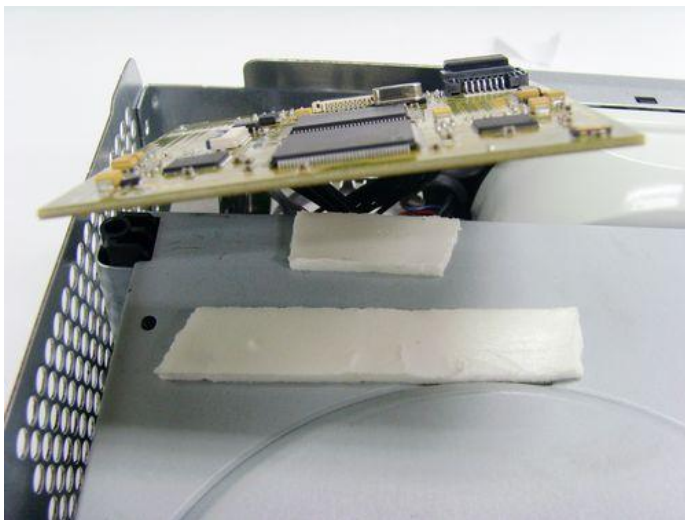


3. Connect our extra SATA/power cables which comes from "TO DRIVE" connector to your XBOX360 DVD drive.

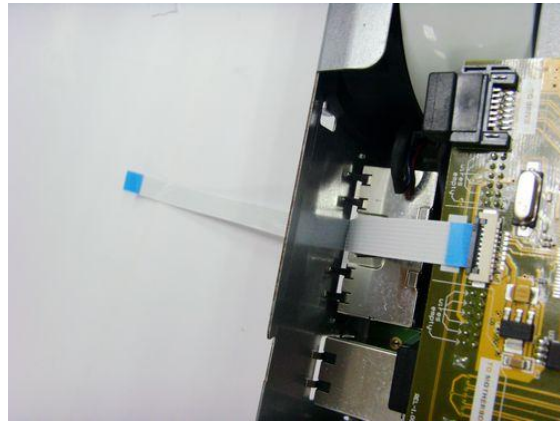
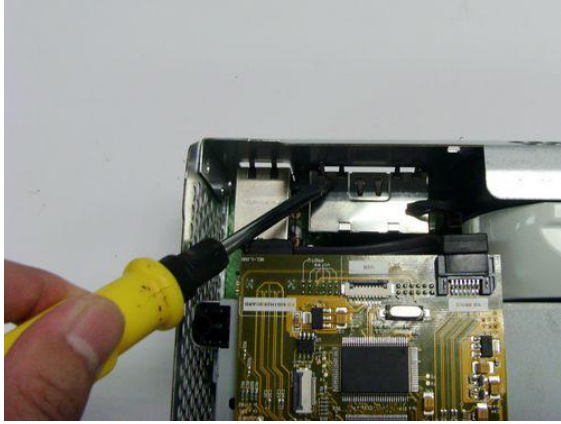


4. Place the DVD drive inside the Xbox360 and put those cables at the free space to make them fit comfortable, be careful, do not blend them too much and avoid breaking them internally.

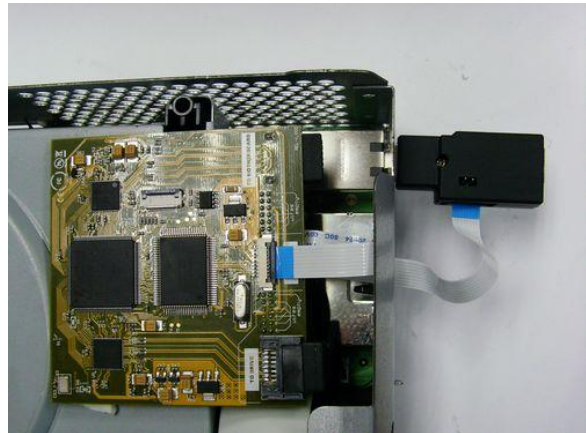
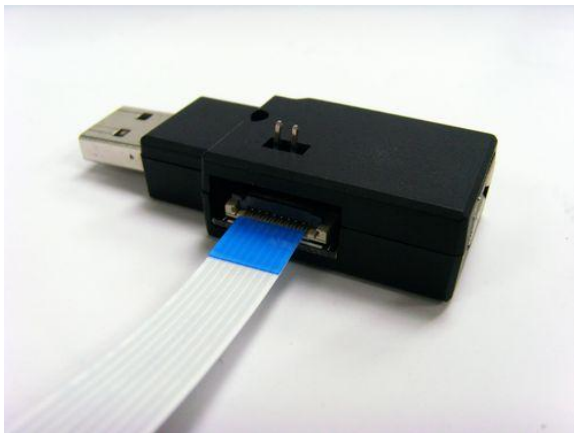
5. Set small pieces of double faced adhesive tape in the DVD drive and put the X360dock's motherboard on the DVD drive.



6. Move down the small video connector or USB flaps using some tweezers, open the X360dock USB connector, plug our Flexible Flat Cable (you must to see the small blue side part), close the connector and send out the flat cable through the video connector.



7. Open the flap of dongle, link the another flat cable blue part side and close carefully the flap (double check it's really closed), finally plug the dongle in your Xbox360 USB connector



8. Paste the insulating tape on the top cover plate to avoid any shortcircuit.



9. Don't close your covers yet, check all the cables and make sure they are correctly connected. Power on Xbox360, video (move up the Flat Cable to plug it properly), connect the Mini USB cable to PC, then test whether the X360dock is correctly working in Xbox360 (X360dock PC Software User Guide).

10. Once you've checked the X360dock working, insulate it with electrical tape at the top layer and assembly the covers taking special careful over do not break the Flat Cable, unplug it from dongle if needed and re-plug it again once it's sent out through the cover holes.



And there you have it, your Xbox Fat equipped with X360dock! Enjoy!!!



X360dock